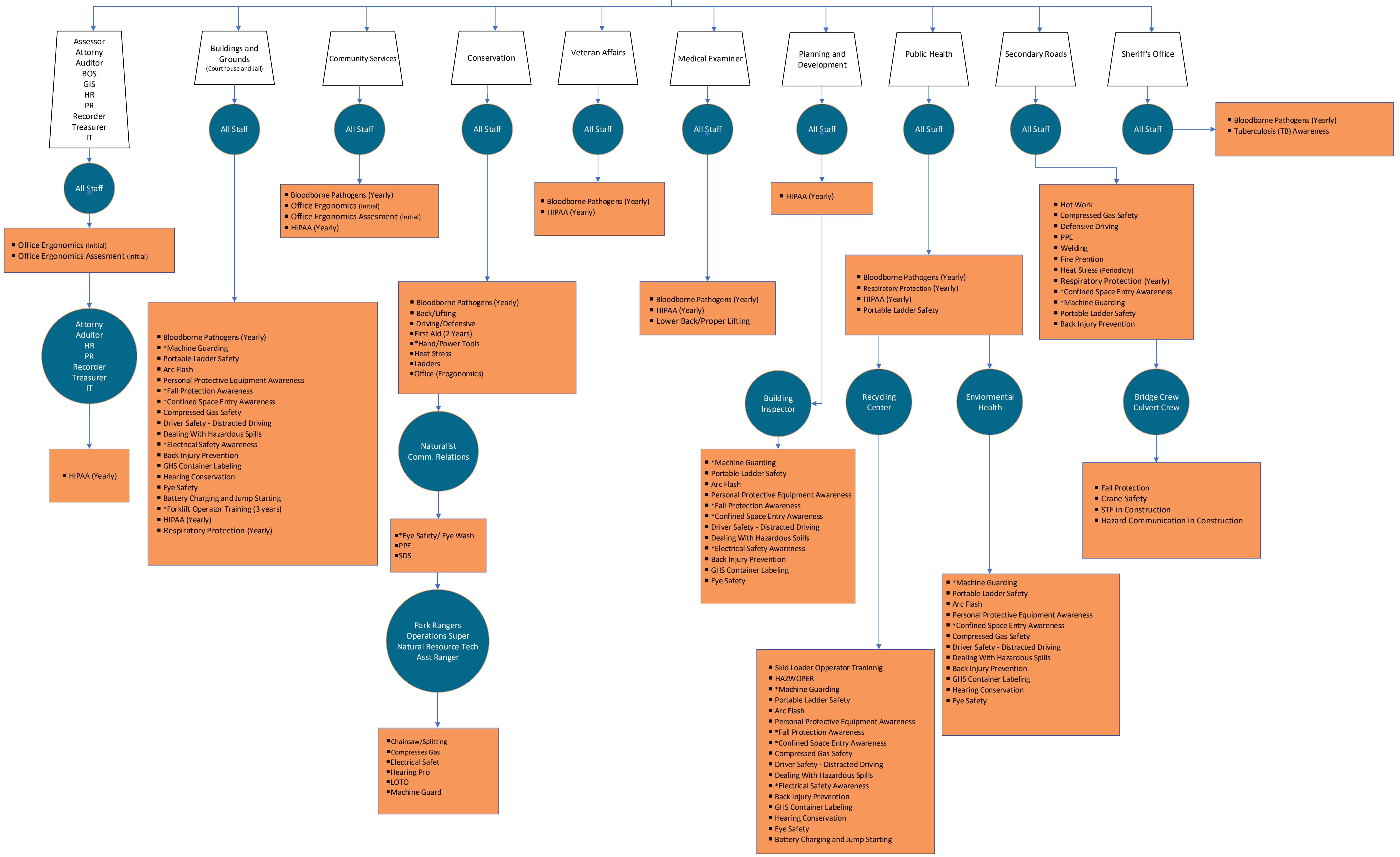


All County Employees - Upon Hire
class (recurrence)

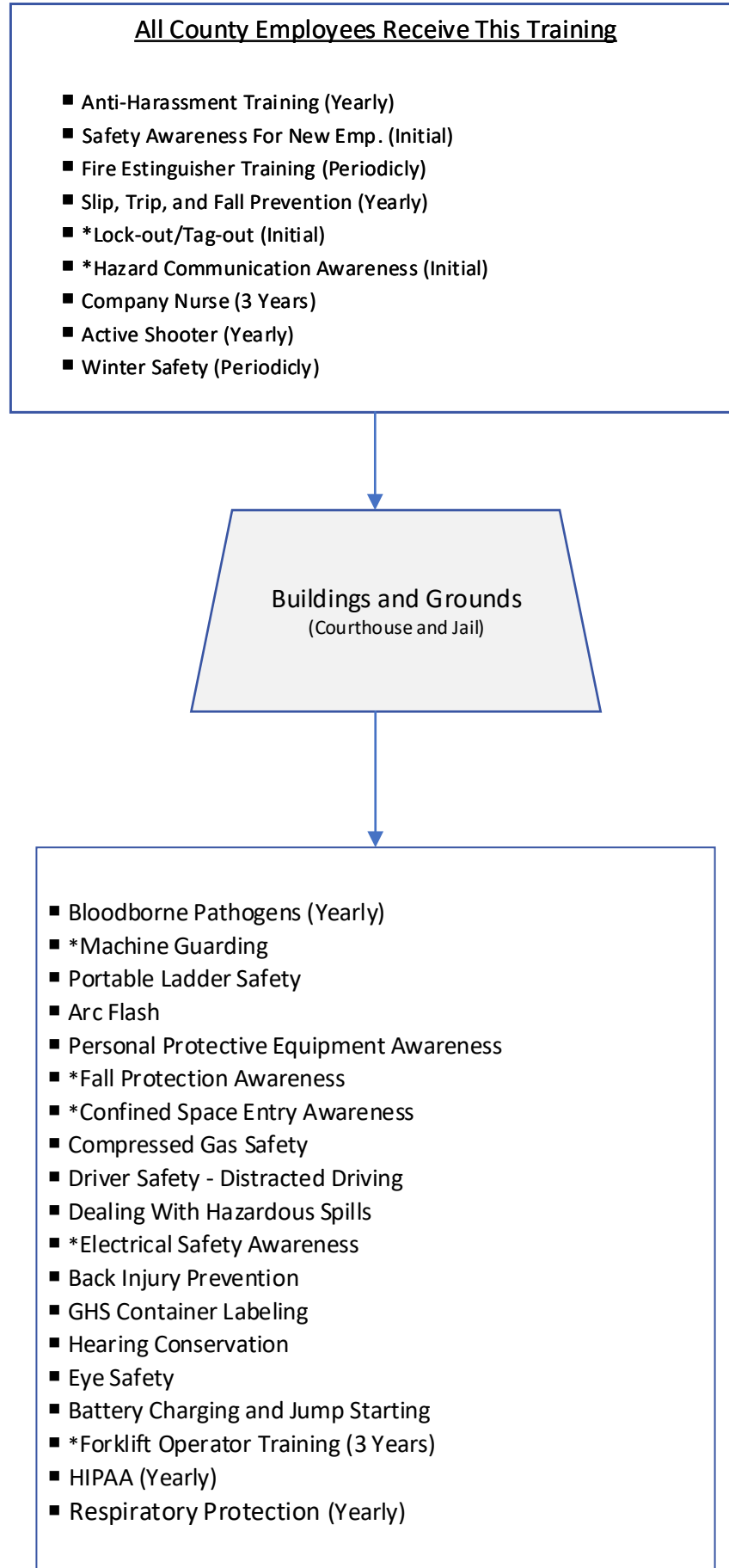
- Anti-Harassment Training (Yearly)
- Safety Awareness For New Emp. (Initial)
- Fire Extinguisher Training (Yearly)
- Slip, Trip, and Fall Prevention (Yearly)
- * Lock-out/Tag-out (Initial)
- * Hazard Communication Awareness (Initial)
- Company Nurse (3 Years)
- Active Shooter (Yearly)
- Winter Safety (Periodically)

Note:
* Additional training will be required when changes such as modification of tasks or procedures or institution of new tasks or procedures affect the employee's occupation exposure



Buildings and Grounds Training Matrix

(Reviewed 2023 - Ben S. and Jake H.)



Note:

* Additional training will be required when changes such as modification of tasks or procedures or institution of new tasks or procedures affect the employee's occupation exposure